



## INSTALLATION INSTRUCTIONS

### SWITCHING RELAY

Product Ref: E388

### GENERAL DESCRIPTION

This relay unit has been designed to transfer the input of the lamp control gear from the normal lighting supply to the back-up supply, upon failure of the normal local supply. It is recommended for use with luminaires containing Electronic (HF) lamp control gear. Magnetic (switch-start) circuits may be employed, however, if the following conditions are met:

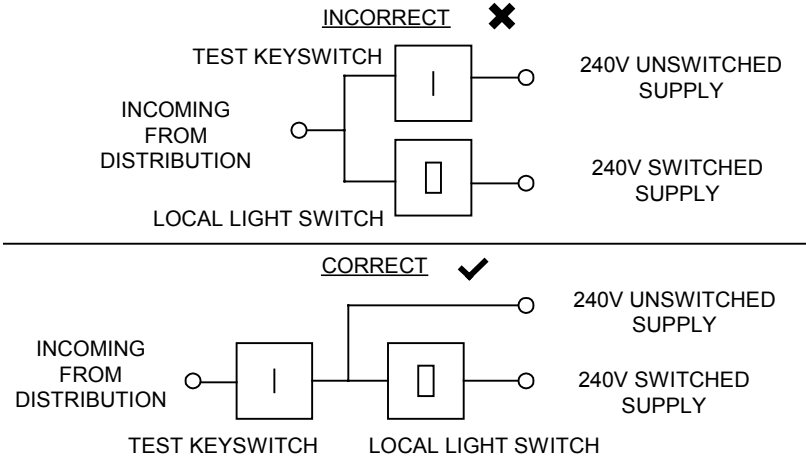
- 1) The PFC capacitor does not exceed 1uF
- 2) The back-up supply supplies the correct ac voltage and frequency for the magnetic ballast
- 3) The back-up supply does not produce a dc output at any time

### INSTALLATION

A qualified and competent person must carry out the fitting of this relay to the luminaire. The relay should be connected only as instructed by this document. It is imperative to note the connection diagram below when employing any test facility that interrupts the unswitched or "sensing" supply. Damage to the luminaire or its components and subsequent invalidation of warranty will result if ignored.

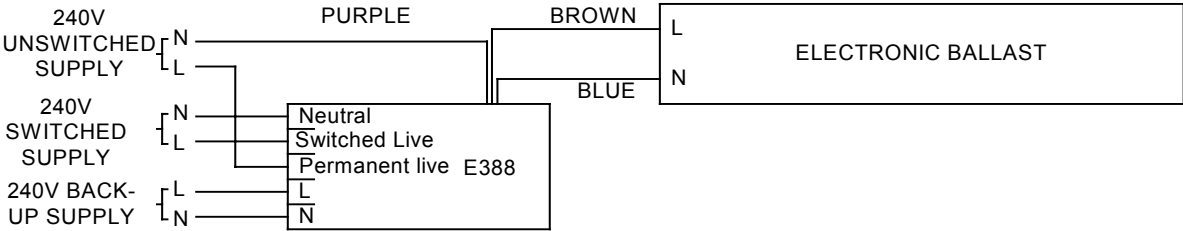
### CONNECTIONS

#### INSTALLATIONS WITH TEST KEYSWITCH



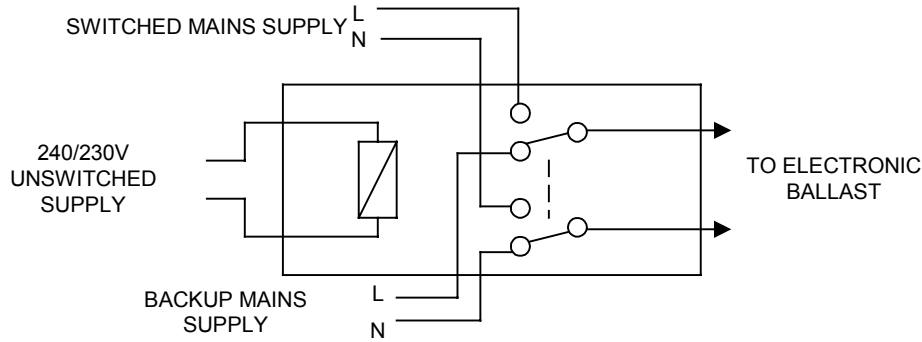
**THE KEYSWITCH MUST FAIL BOTH SWITCHED AND UNSWITCHED SUPPLIES!!**

### WIRING DIAGRAM





## SCHEMATIC DIAGRAM (CONTACTS SHOWN IN THE NORMALLY CLOSED (EMERGENCY) STATE)



## PHYSICAL DETAILS

Dimensions:

Overall Length:	123 mm
Body Length:	95 mm
Width:	34 mm
Height:	34 mm
Fixing Centres:	115 mm
Stud Mounting:	M8 x 12 mm
Weight:	95 g

## SPECIFICATION

Sensing Supply	230V $\pm$ 10%
Rated current	3A
Make current	5A
Maximum break voltage	440V AC
Maximum breaking capacity	250VA

## WARRANTY

All our electronic products are guaranteed for three years to cover both faulty workmanship and materials. Our warranty is "Return-to-base" and requires that the product is used within the terms and conditions stated above and in our literature. Items should be carefully checked thermally so that the specified temperatures are not exceeded under any conditions. Do not insulation test this product. Products returned to us under warranty must be carriage paid. Mackwell Electronics accept no liability for costs incurred. This does not affect your statutory rights.